



Metrics ID	Metrics Deviation
4.2.3	Institution has subscription for e-resources and has membership/ registration.

Institution has subscription for e-resources and has membership/ registration.					
Academic Year	2018-19	2019-20	2020-21	2021-22	2022-23
Value Added Course	0	0	0	0	4

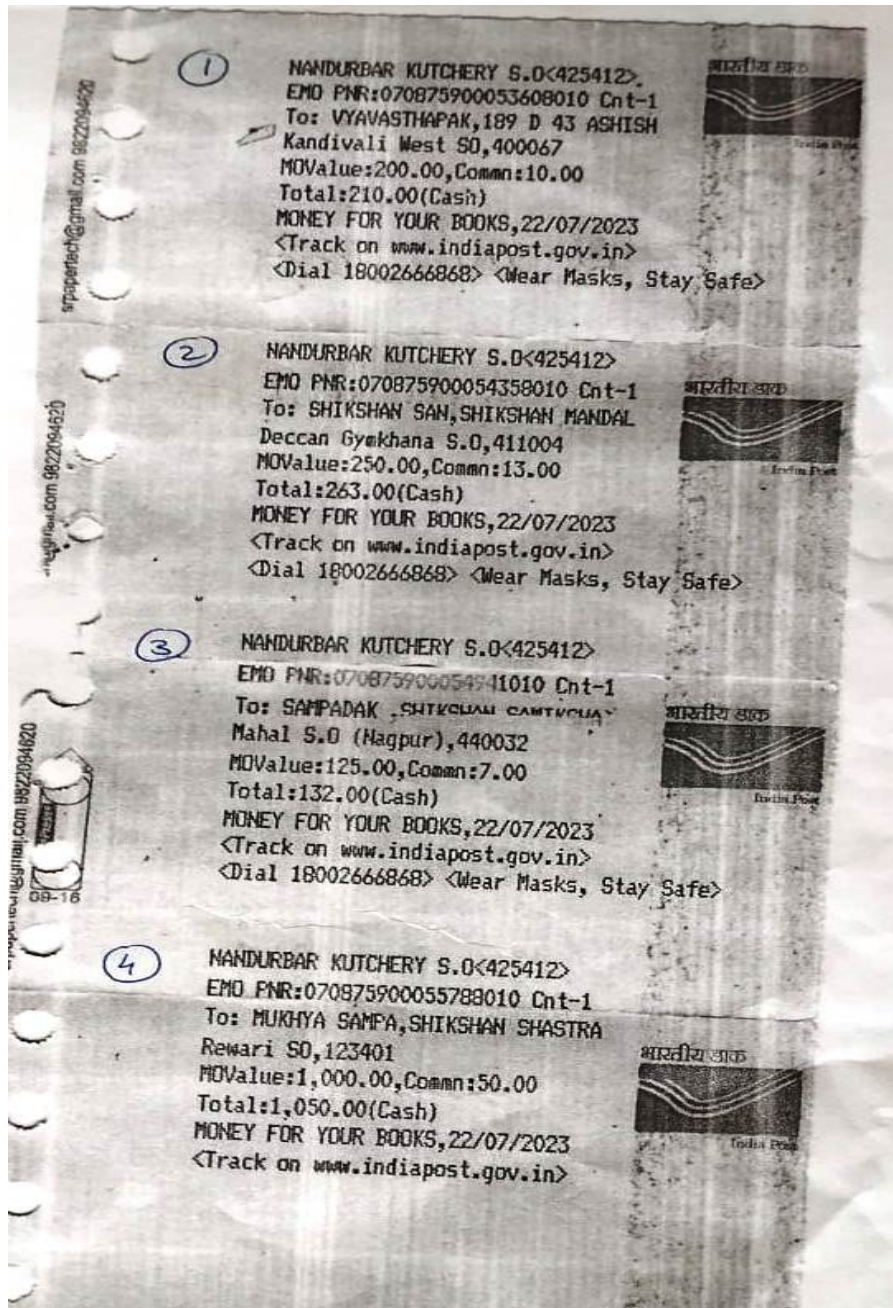
As above mentioned data in the table, institution is declared that the Institution has subscription for e-resources and has membership/ registration with certified attached documents.



NAAC
Co-ordinator
J.E.S.'s College of Education
Nandurbar (MH)



PRINCIPAL
Jijamata Education Society's
College of Education (B.Ed.)
Nandurbar (Dist.-Nandurbar)



MAAC
Co-ordinator
J.E.S.'s College of Education
Nandurbar (MH)



PRINCIPAL
Jijamata Education Society's
College of Education (B.Ed.)
Nandurbar (Dist.-Nandurbar)